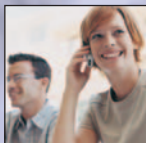
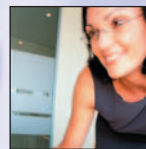
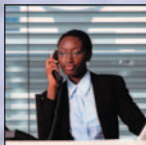


# MFC-8440-8840D-8840DN Laser Multi-function centre

FAX • PRINTER • COPIER • SCANNER • PC FAX



## The Ultimate in Multi-Functionality

- Fast – up to 21 ppm
- Up to 2400 x 600 dpi (HQ1200) printing
- 5-Line display for easy operation
- Automatic Duplex printing (MFC-8840D / MFC-8840DN only)



MFC-8440



MFC-8840D / MFC-8840DN



At your side.  
**brother**®

# Unprecedented performance. Unparalleled value.

## VERSATILE PAPER CAPACITY

This line of products was designed to help you with even the most demanding tasks, with features such as a standard 250-sheet paper capacity that can handle both letter and legal-sized paper. For high-volume applications, you can add an additional 250-sheet paper tray for a total capacity of 500 sheets<sup>1</sup>. Plus, if you ever do run out of paper, you'll be confident to know that the 32MB of standard memory can store up to 600 pages\* of incoming faxes for you to print later at your convenience.

Our MFC-8840D and MFC-8840DN models also feature an additional convenient 50-sheet multi-purpose tray — that can store anything from letterhead to envelopes to card stock — and enables you to print on a wide range of media types and sizes.



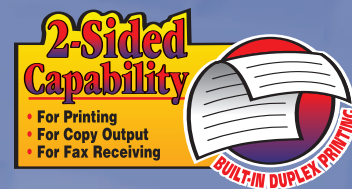
MFC-8840D with 50-sheet multi-purpose tray



MFC-8840D with optional second paper tray

## BUILT-IN DUPLEXING

The MFC-8840D and MFC-8840DN both feature a time-saving, paper-saving duplexing feature that enables you to automatically print on both sides of a document for printing, copying output, and fax receiving. With duplex printing or fax receiving, paper usage can be substantially reduced. Duplex copying allows you to copy a single-sided multi-page document and put it on half the paper in front/back format.



MFC-8840D shown

## WIDE COMPATIBILITY

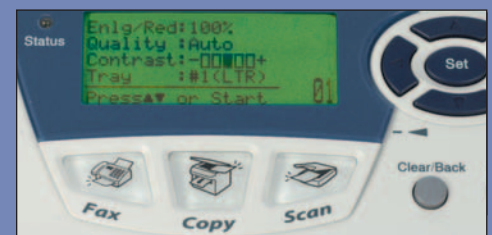


Each model is compatible with virtually all operating systems from Windows<sup>®</sup> to Mac OS<sup>®</sup> to DOS. Supported emulations include PCL6, BR-Script3 (PostScript<sup>®</sup> Level 3), Windows<sup>®</sup> 98/NT4.0/2000/Me/XP, DOS PCL6, Mac OS<sup>®</sup>: 8.6-9.2, OS X 10.1/10.2.1-10.3 or greater.<sup>3</sup>



## EASY-TO-USE 5-LINE LCD DISPLAY

The large easy-to-read backlit display provides all the information you need. It makes accessing functions fast and easy. Plus, multi-directional navigation keys and individual function keys make it easy to customize settings.



# MFC-8440 / MFC-8840D / MFC-8840DN



## Key Features at a Glance

### MFC-8440

- Up to 21ppm print speed
- Up to 2400 x 600 (HQ1200) print resolution
- 5-line LCD display for fast setting and feature access
- Flatbed design for easy copying, faxing, and scanning of bound documents
- 32MB (up to 600 pages\*) fax memory
- 250-sheet paper tray (optional second 250-sheet tray available)<sup>1</sup>
- 33.6K bps fax
- Up to 9600 x 9600 dpi (interpolated) color scanner with OCR support
- Legal-size scanning area
- Up to 50-sheet auto document feeder
- Mac<sup>®</sup> and Windows<sup>®</sup> compatible
- USB and Parallel interfaces<sup>2</sup>
- Emulations PCL6, BR-Script 3 (Equivalent of PostScript<sup>®</sup> Level 3)



### MFC-8840D

Includes the features of MFC-8440 plus...

- Built-in auto duplex in fax receive, copy output, and print modes
- 50-sheet multi-purpose tray for envelopes, letterhead, card stock

### MFC-8840DN

Includes all of the above mentioned features plus...

- Built-in NC-9100h Internal Network board

Energy Star			Technical Specifications	
	MFC-8440	MFC-8840D/DN		
Modem Speed/Best Transmit Speed*	33.6K bps / 2 sec.	33.6K bps / 2 sec.		
Color or B&W Faxing	B&W	B&W		
Auto Document Feed Capacity	Up to 50 Pages	Up to 50 Pages		
Paper Capacity (Std./Max. Pgs.)	250/500 Sheets <sup>1</sup>	300/550 Sheets <sup>1</sup>		
Paper Size(s)	Letter, Legal, A4, B5, A5, B6, A6, EXE	Letter, Legal, A4, B5, A5, B6, A6, EXE		
Standard Memory Capacity (Max. Pgs.)*	32MB (600)	32MB (600)		
Broadcasting (# of Locations)	Yes (up to 390)	Yes (up to 390)		
Quick Scan (Seconds/Page)*	Yes (2 sec.)	Yes (2 sec.)		
Remote Retrieval	Yes	Yes		
Fax Forwarding/Paging	Yes / Yes	Yes / Yes		
Dual Access	Yes	Yes		
One Touch/Speed Dial Locations	40/300	40/300		
Fax Compatibility	ITU-T Super G3	ITU-T Super G3		
Coding Method(s)	MH/MR/MMR/JBIG	MH/MR/MMR/JBIG		
Printing Method	Electrophotography/Laser	Electrophotography/Laser		
Print Speed (Max. ppm)	21ppm	21ppm		
Print Resolution (Max. dpi)	HQ1200 (Up to 2400 x 600)	HQ1200 (Up to 2400 x 600)		
Duplex Printing	Manual	Automatic		
Parallel & Full Speed USB 2.0 Interfaces	Yes	Yes		
Ethernet Interface	Optional (NC-9100h)	Optional on MFC-8840D (NC-9100h)		
Windows <sup>®</sup> Compatibility	98/98SE, Me, NT <sup>®</sup> 4.0, 2000, XP	98/98SE, Me, NT <sup>®</sup> 4.0, 2000, XP		
Emulation(s)	PCL6, BR-S3 (Postscript <sup>®</sup> 3 Emulation)	PCL6, BR-S3 (Postscript <sup>®</sup> 3 Emulation)		
Mac <sup>®</sup> Compatibility	OS 8.6-9.2 <sup>1</sup> , OS X 10.1/10.2.1-10.3 or greater <sup>7</sup>	OS 8.6-9.2 <sup>1</sup> , OS X 10.1/10.2.1-10.3 or greater <sup>7</sup>		
Copy Speed (Max. cpm)	21cpm	21cpm		
Color or B&W Copying	B&W Flatbed	B&W Flatbed		
Copy Resolution (Max. dpi)	600 dpi Class	600 dpi Class		
Sorting Function	Yes	Yes		
Reduction/Enlargement	25% - 400% in 1% increments	25% - 400% in 1% increments		
Color or B/W Scanning	Color Flatbed	Color Flatbed		
Optical Resolution (Max. dpi)	600 x 2400	600 x 2400		
Interpolated Resolution (Max. dpi)	9600 x 9600 <sup>7</sup>	9600 x 9600 <sup>7</sup>		
Driver Provided	TWAIN, WIA <sup>7</sup>	TWAIN, WIA <sup>7</sup>		
Document Viewer & OCR Software	PaperPort <sup>®</sup> OmniPage <sup>®</sup> for Windows <sup>®</sup> , Presto! <sup>®</sup> Page Manager <sup>®</sup> with OCR for Mac <sup>®</sup>	PaperPort <sup>®</sup> OmniPage <sup>®</sup> for Windows <sup>®</sup> , Presto! <sup>®</sup> Page Manager <sup>®</sup> with OCR for Mac <sup>®</sup>		
PC Fax Software	Yes	Yes		
Maximum Memory Printer Memory <sup>1</sup>	160MB	160MB		
LAN Option <sup>1</sup>	NC9100h	NC9100h (Standard on MFC-8840DN)		
Consumable Type <sup>1</sup> (Max. Yield)	TN540 (3,500 pgs.) <sup>5</sup> TN570 (6,700 pgs.) <sup>5</sup> DR510 Drum Unit <sup>6</sup>	TN540 (3,500 pgs.) <sup>5</sup> TN570 (6,700 pgs.) <sup>5</sup> DR510 Drum Unit <sup>6</sup>		
Unit Dimensions (W x D x H) (mm)	532mm x 444mm x 469mm	532mm x 444mm x 469mm		
Carton Dimensions (W x D x H) (mm)	567mm x 628mm x 575mm	567mm x 628mm x 575mm		
Unit/Carton Weight (kg.)	16.6/21.8 kg.	18.1/23.3 kg.		
UPC Code	0 12502 61034 2	MFC-8840D: 0 12502 61035 9 MFC-8840DN: 0 12502 61036 6		

Minimum System Requirements and Supported PC Software Functions								
Computer Platform & Operating System Version	Supported PC Software Functions	PC Interface	Processor Minimum Speed	Minimum RAM	Recommended RAM	Available Hard Disk Space		
						For Drivers	For Applications	
Windows <sup>®</sup> Operating System	98, 98SE	Printing, PC Fax, Scanning	Parallel, USB	Pentium 75Mhz	32MB	32MB	80MB	100MB
	Me	Printing, PC Fax, Scanning	Parallel, USB	Pentium 150Mhz	32MB	64MB	80MB	100MB
	NT <sup>®</sup> Workstation 4.0	Printing, PC Fax, Scanning	Parallel only	Pentium 75Mhz	32MB	64MB	80MB	100MB
	2000 Professional	Printing, PC Fax, Scanning	Parallel, USB	Pentium 133Mhz	64MB	128MB	80MB	100MB
	XP	Printing, PC Fax <sup>2</sup> , Scanning <sup>1</sup>	Parallel, USB	Pentium 233Mhz	128MB	256MB	80MB	180MB
Mac <sup>®</sup> Operating Systems	OS 8.6 - 9.2	Printing, PC Fax send, Scanning <sup>3</sup>	USB only	All base models meet minimum requirements.	32MB	64MB	50MB	200MB
	OS X 10.1 / 10.2.1-10.3 or greater <sup>7</sup>	Printing, PC Fax send, Scanning <sup>1,4</sup>	USB only		128MB	160MB	50MB	200MB

<sup>1</sup>Maximum 1200 x 1200 dpi scanning with Windows<sup>®</sup> XP (resolutions up to 9600 x 9600 dpi can be selected using the Brother Scanner Utility).  
<sup>2</sup>Brother PC Fax send only. For PC fax Receive, please use Windows<sup>®</sup> XP built-in function.  
<sup>3</sup>Scanning only available for Mac OS 10.2.1-10.3 or greater.  
<sup>4</sup>Dedicated "Scan to" key and Network scan functions not available in the Mac<sup>®</sup> Operating Systems.

For the latest drivers, access the Brother Solutions Center at <http://solutions.brother.com>

## Optional Supplies and Accessories<sup>†</sup>

- TN540: Standard Toner Cartridge (3,500 pages per cartridge)
- TN570: High Yield Toner Cartridge (6,700 pages per cartridge)
- DR510: Drum Unit
- LT5000: Second Lower Paper Tray Unit (Additional 250 Pages)
- NC9100h: Internal LAN Option (Ethernet)



\* Based on Brother No.1 Chart with MMR or JBIG coding at standard resolution in ECM  
<sup>†</sup> Requires additional purchase  
<sup>‡</sup> Cables not included  
<sup>§</sup> Based on approx. 5% coverage of letter size paper  
<sup>¶</sup> Up to 20,000 pages  
<sup>7</sup> See minimum system requirement chart for details

For more information please visit our Web site at [www.brother.com](http://www.brother.com)

At your side.  
**brother**®

# Work more efficiently.



MFC-8440

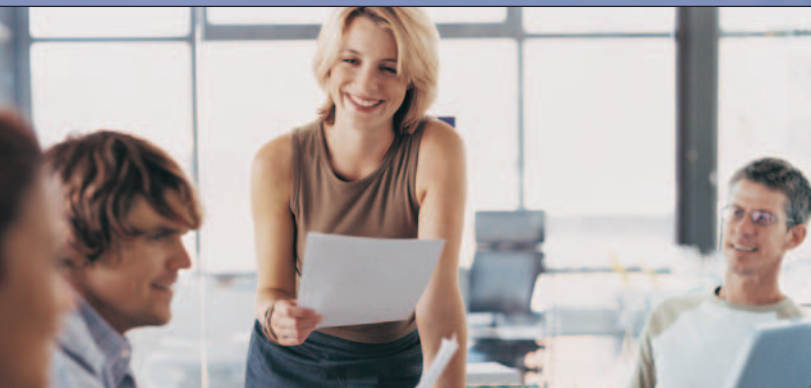


MFC-8840D / MFC-8840DN

**Welcome to a new class of do-it-all, high-end office machines designed to function as workhorses for busy offices.**

They're for those with high-usage requirements who have no time to run to the copy room, no time to wait for someone else to print, fax, or scan documents. These machines are fast. They produce professional, high-quality results at the touch of a button. They're reliable and they're economical to buy and to operate. This should come as no surprise, considering their award-winning heritage. Think of them as the room-sized multi-use machines found in corporate copy rooms... with a more compact footprint.

All models feature effortless set-up and are easy to use. Best of all, they're from Brother, a leader and innovator in multi-function products — a must-have purchase for anyone who needs a high-speed, high-quality solution to make his or her working life simpler and more productive.



# Performance Workhorses.



## Here's why...

### LASER PRINTER

**Professional, high-quality printing at an impressive speed...**

Why should you settle for anything less? These true business class Multi-Function Center® models deliver up to 2400 x 600 (HQ1200), ultra-sharp monochrome laser resolution. And they're fast. Which means you can print crisp, clear documents, complete with text and graphics, in time to meet the tightest of deadlines. And, because some of these models offer duplex printing, their ability to save paper by flawlessly printing on both sides of a page will help with those tight budgets as well.

### DIGITAL COPIER

**Fast, flatbed copying with many choices...**

How many people are coming to your meeting? Doesn't matter. You have a full function copier at your fingertips, so you can make up to 99 copies at a time. Want to include complicated graphs/charts? With the reduce/enlarge 25% – 400% feature, you can fit whatever you need on a page... or make a really big point. Thanks to the professional flatbed design, you can even copy or scan bound documents. And, the duplexing feature on the MFC-8840D and MFC-8840DN models will make copying any large document more manageable while saving you time and money.

### PLAIN PAPER FAX

**Feature-rich with plenty of options...**

Whether sending or receiving, no one likes to wait for a fax... and with these models, you won't have to. They have 33.6K bps modems — assuring you the fastest available fax transmissions.

Their large 50-sheet auto document feeder means less "stand-around" time, and the 250-sheet paper capacity (and an additional 250-sheet capacity with the optional second tray<sup>1</sup>) means less refilling. And, if you do run out of paper, their 32MB of memory can store as many as 600 incoming pages.\*



With Dual Access, these models can scan in your next fax while one is being sent or received. The large fax memory can also be used for fax broadcasting enabling you to send it to up to 390 people at one time.

And with its PC fax capability you no longer have to depend on paper documents. With these models you can send and receive faxes<sup>2</sup> directly to and from your PC or Mac®, without printing the document first.



## COLOR SCANNER

### Convenient full-color scanning...

Simply scan photos, logos, and images... in color at resolutions up to 9600 x 9600 dpi (interpolated)<sup>3</sup>. You can seamlessly add images to your reports and presentations, or scan directly to OCR applications. The award-winning ScanSoft® PaperPort® and OmniPage® OCR software packages are included for Windows®; and Presto!® Page Manager® is included for the Mac OS®.

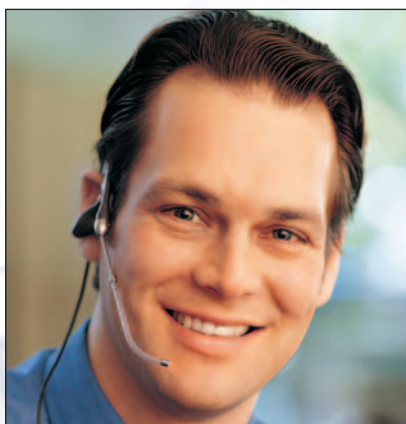


Allows copying or scanning from document glass or auto document feeder.

## NETWORKING

### Easily connects to others in your network.

Thanks to their network capability (standard on the MFC-8840DN and optional on the MFC-8440 and MFC-8840D models), you can share printing, faxing, and scanning functions with others on your network. This feature provides a variety of LAN networking solutions including Internet Fax, Network Printing, Direct Network Scanning, Network Scanning via E-mail, Network Faxing, and Web-based Management Utilities<sup>3</sup>.



## Service and support are part of the package.

Your technology investment is backed by our dedication to comprehensive service and support.

We provide toll-free technical support, a one-year Exchange Express limited warranty, and the online Brother Solutions Center (<http://solutions.brother.com>) — all backed by our nationwide network of authorized customer-care centers.



## Which model is right for you?



MFC-8440



PRINT • COPY • FAX • SCAN • PC FAX

MFC-8840D



PRINT • COPY • FAX • SCAN • PC FAX  
+ 50-SHEET MULTI-PURPOSE TRAY  
+ AUTOMATIC DUPLEX PRINTING

MFC-8840DN



PRINT • COPY • FAX • SCAN • PC FAX  
+ 50-SHEET MULTI-PURPOSE TRAY  
+ AUTOMATIC DUPLEX PRINTING + NETWORKING